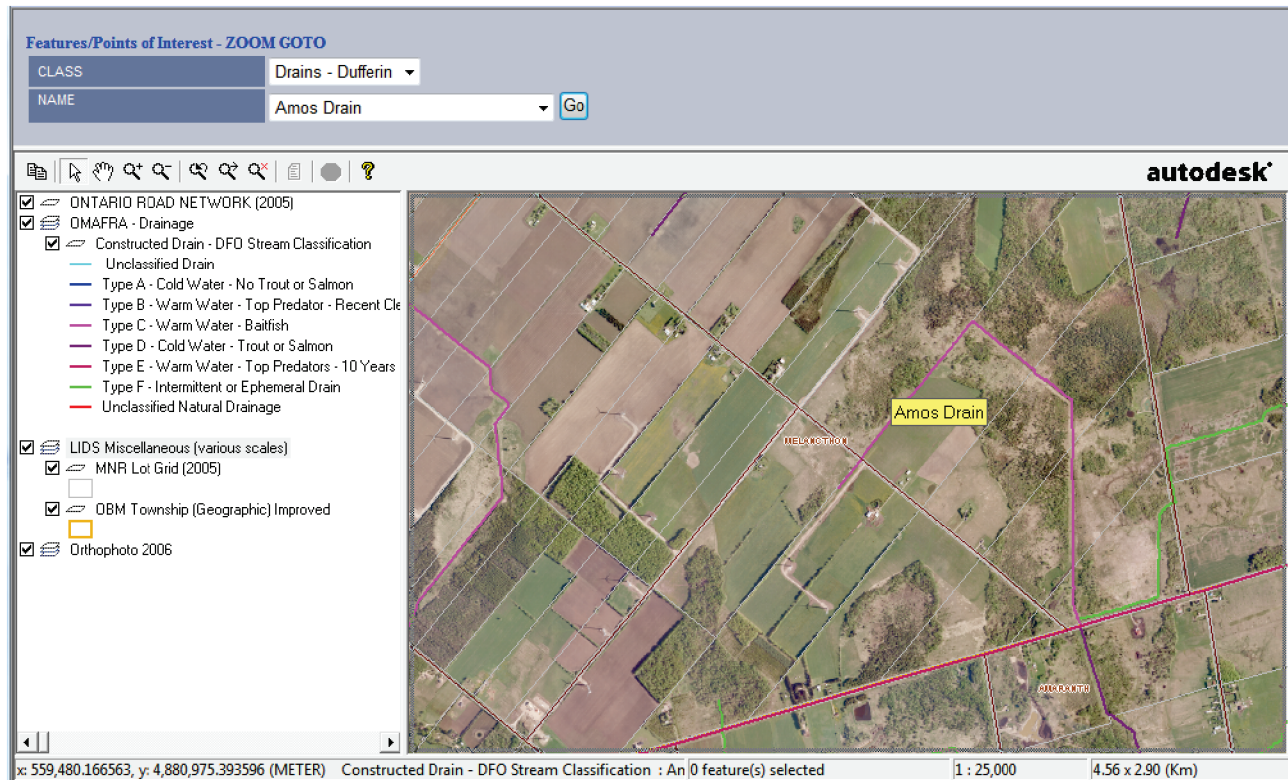


Introduction

The Hunter GIS Municipal Drain Solution permits web-publishing of constructed surface and subsurface drain, Township Lot Fabric, Ownership Parcels, Orthophotos, Single Line Street Networks and other data for quick and easy on-line access.



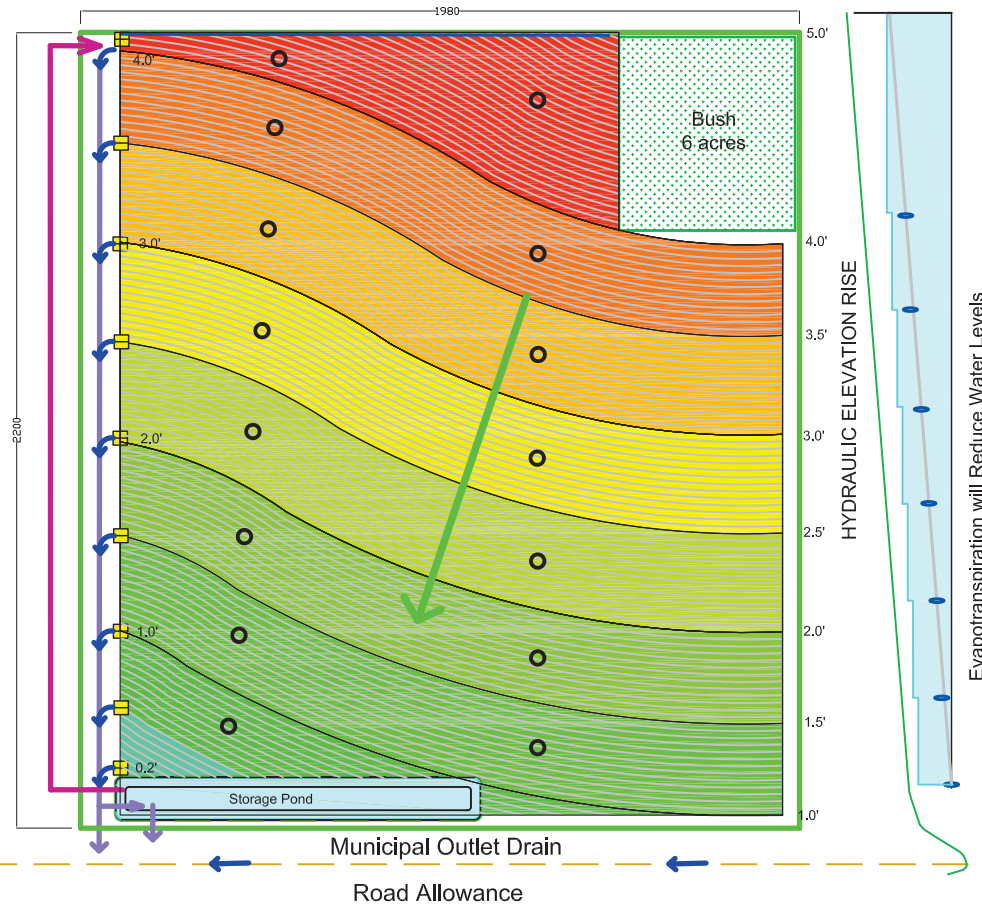
Important features and capabilities include:

- Integrated Municipal Drain searches with “Zoom Goto” functions
- Open and closed drain maps
- Systematic and random drainage systems
- Controlled drainage and subirrigation (over)
- Dept. of Fisheries and Oceans stream classifications
- Assessed watershed areas and catchments
- Approved drain outlets
- Hyperlinked database access to infrastructure images, drawings and documents for desktop viewing
- ODBC/OLEDB links to related databases (local ownership and tax assessment).

Municipal Drains Controlled Drainage / Subirrigation (CDSI)

Dwg 1.0

New or Replacement CDSI with Closely Spaced Laterals, 6 Inch Water Elevation Control Zones and Storage Ponds



LEGEND

| | | | |
|---------------------------------|---|-------------------------|--|
| New 4 in Laterals @ 20' spacing | — | Control Weir | |
| Subirrigation Header (Pumped) | | Ground Surface | |
| Township Lot Line (100 acres) | | Drainage Header | |
| Observation Well | | Drainage Water Flow | |
| | | Bypass Drain / Overflow | |

Plot Scale: H:1" = 400' V:1" = 20'
Plot Date : January 17, 2008

Concept

